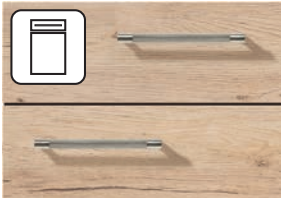
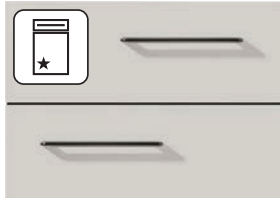


# FORM

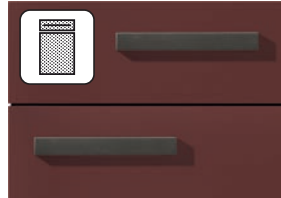
Care and Maintenance instructions.



Laminate fronts



High Gloss Fronts



Ultra matt fronts



Lacquered Fronts



Genuine Wood Fronts

Dear Customer,

In order to help you keep your new kitchen looking new for as long as possible, we have supplied you with this booklet which explains the best advice of how to care for and maintain your cabinets, fronts and worktops.

Read these care and maintenance instructions thoroughly prior to using your kitchen for the first time. They contain general information as well as special instructions, which pertain only to our own products. Keep these documents in a safe place and, if applicable, pass them on to the subsequent owner.

Moreover, pay close attention to the Operating Instructions and any additional information that is enclosed with the furniture, accessory items and electrical appliances.

The manufacturer accepts no liability for damages resulting from improper use of kitchen furnishings. Furthermore, the manufacturer accepts no liability for the results of improper care and operation of the kitchen.

We wish you much enjoyment in and with your new kitchen.



**WARNING:** This product can expose you to chemicals including Formaldehyde, Polybrominated biphenyls and Di(2-ethylhexyl)phthalate (DEHP) which are known to the State of California to cause cancer or birth defects or other reproductive harm. For more information go to [www.P65Warnings.ca.gov/furniture](http://www.P65Warnings.ca.gov/furniture).

## TABLE OF CONTENTS

3	Table of contents
4 - 5	General Care Instructions
6	Care Instructions for Laminate Fronts
7	Care Instructions for High Gloss Fronts
8	Care instructions for Ultra Matt and Polymer Coated Fronts
9	Care Instructions for Lacquered Fronts
10	Care Instructions for Genuine Wood Fronts
11	Care Instructions for Worktops in General
12	Care Instructions for <b>Steam and Heat</b> , Hinges, Pull-Out Rails and Cutlery Trays.
13	General Instructions and Safety Information
14	Adjustment of Hinged Doors
15	Adjustment of Drawers and Pull-Outs
16	General load bearing information
17	Quality, energy and environmental management

## General Care Instructions

The high quality surfaces of a kitchen are generally very easy to care for. To retain the value and prolong the service life of your new kitchen for many years to come, you should, however, regularly and above all, properly, care for it.

**For this reason, please observe the following care instructions:**

- ◆ Use only mild, water-soluble household cleaning agents, the product information of which expressly states that they are designed for use on kitchen furnishings.
- ◆ Never use solvents or products containing alcohol.
- ◆ Regardless of whether you have purchased a high gloss front or a super matt laminate front, never use harsh chemical substances such as abrasive agents or solvents on your fronts. Scouring powders, steel wool or pot scrubbers can also damage the surface to a degree that it is no longer possible to repair or touch up.
- ◆ Never use glass cleaners on this surface because they contain solvent-based substances.
- ◆ Use a soft, non-pilling cloth, a leather cloth or a soft sponge for cleaning.



Do not use micro-fibre cloths or eraser cleaning pads. These often contain fine sanding particles which can scratch the surfaces of your new kitchen.

- ◆ Always remove soiling as quickly as possible. Fresh stains can be much more easily and thus, usually completely removed.

**Under no circumstances should you use a steam cleaner or running water from a hose!**

- ◆ After cleaning, always wipe all surfaces completely dry. In general, avoid extremely moist surfaces from using cloths, that are too wet, or steam build-up during and after cooking.

Keep all surfaces dry at all times! Allowing water or other liquids to pool on the surface can lead to lasting damage!

Varying material designs require individualised care instructions. Therefore, please observe the special instructions for the care of your kitchen.

For fronts with integrated, milled bar handles (image 1), use extra care when opening and closing doors, flaps and pull-outs as fingernails and rings, among others, could leave marks on the sensitive surface. The premium quality lacquer in the bar handle vicinity will nevertheless likely show some small scratches. These are the consequence of the selection of this style front and thus construction-induced and do not constitute grounds for complaint. Please protect the bar handle from standing or flowing liquids.

Spilled liquids, condensing moisture or standing moisture from cleaning could collect in the milled bar handle (image 2). Immediately remove any moisture. Otherwise this could result in swelling. Damage of this type will not be accepted as grounds for complaint.





## Care Instructions for Laminate Fronts

Laminate fronts can be easily cleaned with conventional household and commercially available mild cleaning products. Do not use abrasive cleaners.

Apply cleaning agent diluted with water respective to the degree of soiling. Use a soft cloth for cleaning. Then, remove any cleaning agent residue with clean water and wipe the doors dry.

Stubborn stains such as lacquer, glue residues or grease spatters can be easily removed with commercially available plastic cleaners. Prior to use, test the cleaning product on a small concealed area of the surface.

Vinegar cleaners, cellulose or resin thinners and nitro-based cleaners are not suitable for cleaning these surfaces.

Never use a steam cleaner!





## Care Instructions for High Gloss Fronts

Fronts with a high gloss surface are characterised by their brilliant sheen, which is created by a high-gloss polymeric lacquered laminate.

To ensure that the fronts are protected from damage during processing as well as transport, they are covered with a protective film. This protective film should only be removed during the final step of installation.

High gloss fronts are exceptionally easy to clean since the surface is completely sealed. Soiling can, therefore, be easily removed with little or no use of force and largely without the use of chemical agents.

Never use glass cleaners on this surface because they contain solvent-based substances!

Ensure that any cleaning materials (cloths, sponges, etc.) are completely clean.

Any pre-existing mineral-based soiling such as sand or dust particles could lead to scratching of the surface.

**The manufacturer accepts no liability for any signs of wear of this type.**

All cleaning materials - if possible cotton cloths (no micro-fibre cloths!) - must be thoroughly cleaned and rinsed prior to use. Repeatedly rinse out all cleaning materials to ensure that mineral dust particles or perhaps metallic dust that was picked up while cleaning leave no marks on the high gloss surface.

After assembly, it is recommended cleaning the inside of the units with a cleaning agent (sold separately). Metallic abrasion might occur while screw connecting the units, which could lead to scratches on the fronts.

This could result in tiny, microscopic signs of wear. These marks are more or less noticeable depending on colour and amount of light coming into the area. These marks in no way reduce the practical value, but are unavoidable over the long term as with all high gloss surfaces on cars, glasses or other furniture surfaces.

The manufacturer accepts no liability for signs of wear of this type.





## Care instructions for Ultra Matt and Polymer Coated Fronts

Fronts with ultra matt finishes are distinguished by a velvety smooth look and feel. They are wear-resistant and have a highly cross-linked functional layer. Due to an innovative anti-fingerprint coating they are extremely robust and have outstanding care properties.

To ensure that the fronts are not damaged during processing or transport they are covered with a protective film.

This film should only be removed in the final work step during installation.

Ultra matt fronts are characterised as being very easy to clean, since, unlike with other finishes, dirt can be removed without the use of force or chemical agents.

**Never use glass cleaners on this surface because they contain solvent-based substances!**

Ensure that any cleaning materials (cloths, sponges, etc.) are soft and completely clean.

Any pre-existing mineral-based soiling such as sand or dust particles could lead to scratching of the surface.

**The manufacturer accepts no liability for any signs of wear of this type.**

All cleaning materials - if possible cotton cloths (no micro-fibre cloths!) - must be thoroughly cleaned and rinsed prior to use. Repeatedly rinse out all cleaning materials to ensure that mineral dust particles or perhaps metallic dust that was picked up while cleaning leave no marks on the high gloss surface.



After assembly, it is recommended cleaning the inside of the units with a cleaning agent (sold separately). Metallic abrasion might occur while screw connecting the units, which could lead to scratches on the fronts.

This could result in tiny, microscopic signs of wear. These marks are more or less noticeable depending on colour and amount of light coming into the area. These marks in no way reduce the practical value, but are unavoidable over the long term as with all high gloss surfaces on cars, glasses or other furniture surfaces.

The manufacturer accepts no liability for signs of wear of this type.





## Care Instructions for Lacquered Fronts

Lacquered fronts are characterised by excellent surface properties. A top coat of polyurethane varnish is used to create the distinctive look and feel and also to make the lacquer finish more resilient.

To ensure that the fronts are protected from damage during processing as well as transport, they are covered with a protective foil. This protective foil should only be removed during the final step of installation. For a short time, the familiar „lacquer odour“ might occur once the protective film is removed. This will fade over time.

When completely cured, the surface offers a high degree of resistance. Final curing could take a few days after removing the protective film, depending on climatic conditions. Nevertheless, the lacquer surface must be handled with care during later use. Lacquered fronts are renowned for being easy to clean because their surface is sealed, which means that, unlike with matt surfaces, soiling can be easily removed without applying force or the use of harsh chemicals. Never use glass cleaners on this surface because they contain solvent-based substances! Ensure that any cleaning materials (cloths, sponges, etc.) are completely clean. Any pre-existing mineral-based soiling such as sand or dust particles could lead to scratching of the surface!

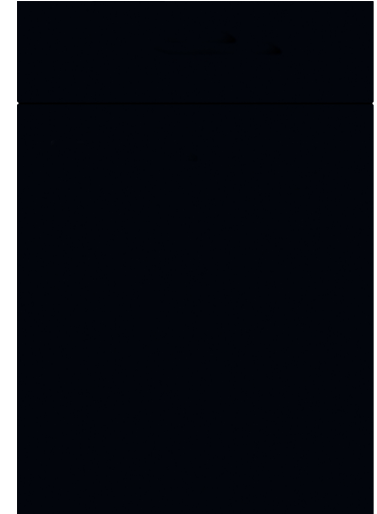
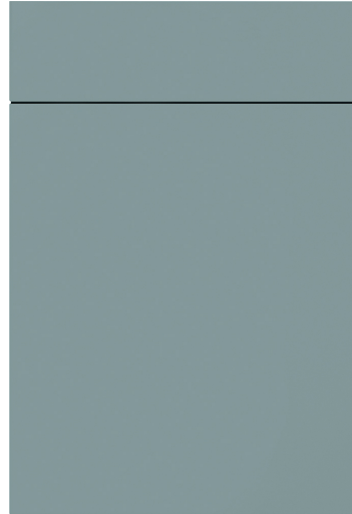
**The manufacturer accepts no liability for any signs of wear of this type.**

All cleaning materials – if possible cotton cloths (no micro-fibre cloths!) - must first be thoroughly cleaned and rinsed prior to use. Repeatedly rinse out all cleaning materials to ensure that mineral dust particles or perhaps metallic dust that was picked up while cleaning leave no marks on the high gloss surface.

After assembly, it is recommended cleaning the inside of the units with a cleaning agent (sold separately). Metallic abrasion might occur while screw connecting the units, which could lead to scratches on the fronts.

This could result in tiny, microscopic signs of wear. These marks are more or less noticeable depending on colour and amount of light coming into the area. These marks in no way reduce the practical value, but are unavoidable over the long term as with all high gloss surfaces on cars, glasses or other furniture surfaces.

The manufacturer accepts no liability for signs of wear of this type.





## Care Instructions for Genuine Wood Fronts

Genuine wood fronts feature carefully selected veneers and woods that have been provided with a protective as well as equalising lacquer finish. The natural variations in the colour and texture of the wood cannot and should not be completely evened out.

Characteristics such as the grain of the veneer, the degree of knotting and variations in colour are all expressions of natural individuality.

In addition, different lighting can also result in colour deviations. Variations in exposure to incidental light and sunlight can actually lead to changes in colour over time. For this reason, differences between patterns and showroom kitchens cannot be excluded. Therefore, replacements or subsequent purchases may not be identical, but only near in colour and texture.

Genuine wood fronts are oriented toward an indoor climate where temperatures range between 15 and 25 degrees Celsius and relative humidity ranges between 45 and 55 %. Wood expands and contracts! Indoor climates that are significantly drier can result in drying cracks, whereas climates that are significantly more humid can lead to swelling.

The lacquer on the genuine wood fronts enables simplified care and cleaning with conventional household cleaning products.

**Due to the open pore structure of the genuine wood fronts stains should never be allowed to dry!**

Residual stains can be removed using a hot soft soap solution and a soft, non-fuzzing cotton or leather cloth. Subsequently wipe up using lukewarm water, then wipe dry.

Do not use micro-fibre cloths or eraser cleaning pads. These often contain fine sanding particles that can lead to scratching of the surface.



## Care Instructions for Worktops in General

Worktops should never be used as cutting surfaces because knives will leave marks on the worktops, even with their hard laminate coating. Use cutting boards made of wood, plastic, granite, or other suitable material.

Porcelain and crockery have an unglazed edge on the bottom. Avoid sliding these materials across the worktop as this could result in slight scratches.

Glossy spots may develop on deep-matt décor from daily use due to sliding objects back and forth.

Never place hot pots, pans or other hot objects directly on the worktop without protection.

**For this purpose always use a trivet!**

Worktops can be cleaned with conventional household cleaning agents (however, no scouring agents!). Apply cleaning agent diluted

with water according to the degree of soiling. Use a soft cloth for cleaning.

Aggressive cleaning agents such as anti-liming agent and cleaning agent for automatic coffee makers may damage the worktop. Make sure that they do not come into contact with the worktop. However, if they do, remove immediately with a moist cloth.

**As a rule: Never allow liquids to stand on worktops, especially on glued joints.**



## Instructions for Steam and Heat

Ensure adequate ventilation during cooking and make certain that steam cannot condense on the furniture elements.

Always use the appropriate power level on the cooker hood! Several cooker hoods and downdraft extractor fans are equipped with an after-run function. These continue to operate for a limited time after switching off in order to "blow out" any remaining water or steam from the system. Do not turn off the after-run in general, or even occasionally. It is very important that the interior dries thoroughly.

Avoid water spilling over.

Wait **20 minutes after the completion of the wash program** before opening the dishwasher so that the steam can condense within the appliance.

Do not operate coffee machines, electric kettles or toasters directly beneath the wall units. Over time, the escaping steam as well as the high temperature could damage the furniture.

Never place hot pots or other hot objects directly on the worktop or other furniture elements without using a protective trivet.

Occasionally check the surface temperature along the side edge of the oven door. As long as you can still touch the edge with your fin-gertip, the amount of heat dissipation is acceptable. If this is not the case, the door seal must be checked by the appliance manufacturer's service technicians.

Do not allow oven and dishwasher doors to re-main slightly open for ventilation purposes because the escaping heat and moisture could result in heat damage and swelling in adjacent furniture components.

Also pay careful attention to the special instructions of electrical appliance and built-in component manufacturers!

## Hinges and Pull-Out Rails

Hinges, drawer and pull-out runners are main-tenance-free. Adjustment is possible.

## Cutlery Trays

Cutlery trays can be removed for cleaning. These can best be cleaned with a mild cleaning agent.



## General Instructions and Safety Information

Working in the kitchen entails handling wa-ter, high temperatures, steam, humidity and dampness. Moreover, many foodstuffs cause tough stains.

Even though modern furniture materials are resistant to most types of wear, there are li-mits to what these can withstand based upon the specific characteristics of the respective materials.

To ensure that you have years of enjoyment from your new kitchen, here are a few brief but important instructions to observe:









The kitchen should be placed in a room with a normal climate. This applies to the tem-perature as well as the relative humidity in the room. The furniture is oriented toward

**Every kitchen is identified with a product identification code (PIC). This is pasted in the interior of the sink unit by the fitter.**

An indoor climate where temperatures range between 15 and 25 degrees Celsius and re-lative humidity ranges between 45 and 55 %. Indoor climates that are significantly drier can result in drying cracks and warping, whereas climates that are significantly more humid can lead to swelling and moulding.

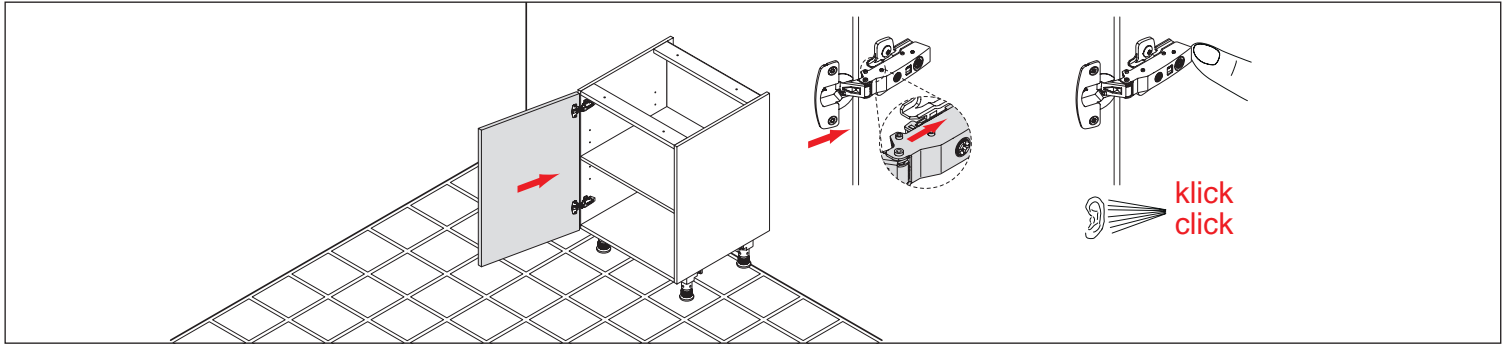
Check the condensation overflow in your re-frigerator regularly to ensure that the conden-sation water does not ice up or spill over.

Only allow trained professionals to carry out electrical and plumbing installation work. Have these installations regularly checked by an expert.

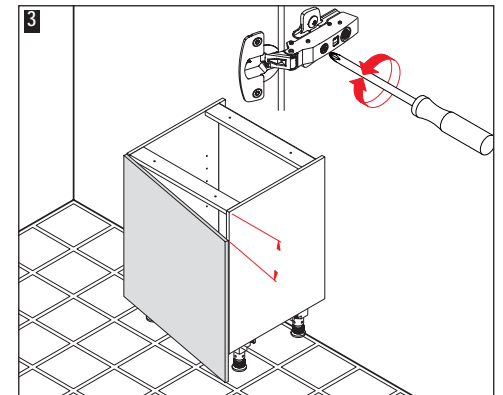
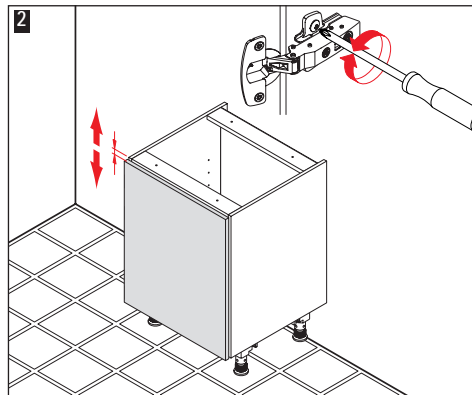
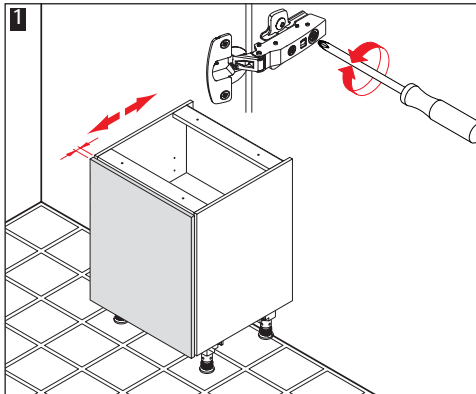
-  Always use your kitchen properly. Im-proper or inappropriate use could result in injury to persons as well as damage to property.
-  Do not stand or sit on the worktop. Never leave children unattended in the kitchen when there is a chance of them switching on electrical appliances.
-  It is prohibited for anyone - especially small children - to crawl inside the units as the doors could shut automatically. These are very difficult, if not impossible, to open from inside.
-  Do not hang on the wall units! Improper loading could pull the unit away from the wall. **Attention, danger of injury!**
-  Never remove the delivered and installed manufacturer's safeguards such as safe-ty brackets, spacers or similar. **Attention, life-threatening danger.**
-  Wall units are generally hung on a moun-ting rail. Do not lean with your full weight against individual hanging wall units. There is a danger of slippage!
-  Do not remove any fittings!  
**Attention, danger of injury!**
-  Disconnect power supply prior to replac-ing light bulbs or cleaning electrical appli-ances.  
**Attention, danger of death!**

## Adjustment of Hinged Doors

All hinged doors are equipped with all metal 3-D quick-fit hinges. The doors can be installed or removed from the mounting plate without tools by means of the clip engagement latches.



- 1 Depth Adjustment
- 2 Height Adjustment
- 3 Side Adjustment



## Adjustment of Drawers and Pull-Outs

### Removing the Front Panel

1 Pull the release lever on the right-hand and left-hand sides forward.

### Mounting the Front Panel

2 Position the front panel on the frame. The front panel engages automatically and audibly on both sides.

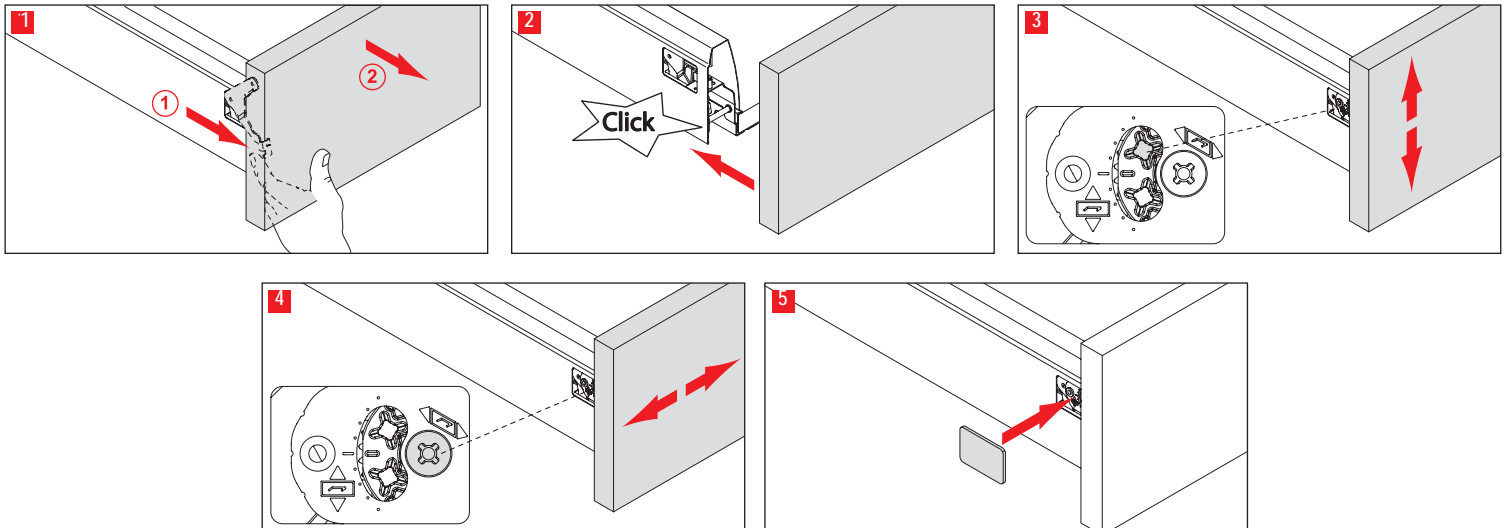
### Height Adjustment

3 The front panel can be adjusted by means of turning the adjustment screw on both sides.

### Side Adjustment

4 The front panel can be adjusted by means of turning the adjustment screw on both sides.

5 Push on the cover caps.



## General load bearing information

All units have been designed using the latest, state-of-art technology. They meet all relevant standards such as, e.g., DIN 68930. All furnishings have received the GS seal for tested and proven safety.

All maximum loads listed in the following have been statically defined, which means: the determined load bearing capacities are the result of „careful and proper placement“ of objects, and not of „letting fall“, „throwing“ or similar improper handling.

The load must be evenly distributed across the surface. Avoid heavy loading of only one spot.

The user is responsible for proper usage.

All shelves, including adjustable shelves, can hold a load up to 50 kg/sq.m.

### Above all, the following applies:

1. Wall units can hold 75 kg, whereby the individual shelves only hold a maximum of 16 kg. The wall unit iMove has a maximum load capacity of 4 kg per shelf.

2. Drawers of all widths and depths have a maximum load-bearing capacity of 30 kg.

3. The pull-outs have the following load-bearing capacities, depending on their width and depth:

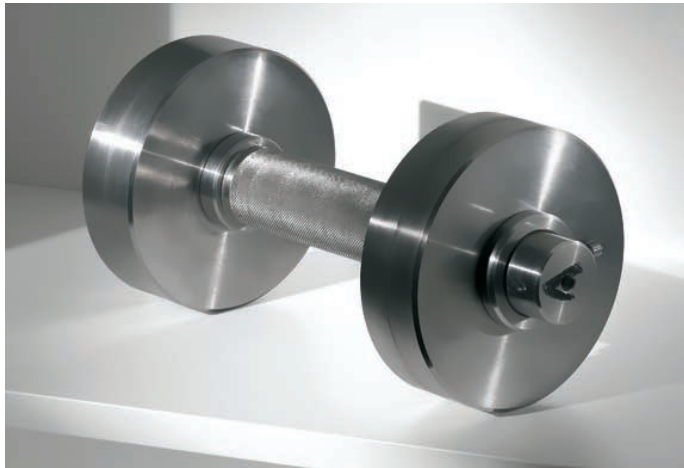
Pull-out depth	Width in cm			
	>/=60	80-90	100	120
27 cm	30 kg	30 kg	30 kg	30 kg
40 cm	30 kg	40 kg	40 kg	40 kg
50 cm	30 kg	45 kg	55 kg	65 kg

4. The load capacity of bathroom base units with heavy-duty suspension brackets is 100 kg per element.

5. Pharmacist's units are especially easy to load and unload. There should be no more than a total of 80 kg of load equally distributed between the baskets and tablars. Base units with larger pull-out Junior have a maximum load capacity of 24 kg.

6. The maximum load capacity for carousel and swivel pull-out corner units is 20 kg per shelf.

7. 15 cm wide pull-out units can hold up to 6 kg per shelf.





## Quality, energy and environmental management

Quality, energy and environment management is an essential element of our company policy, and is in line with the standards DIN EN ISO 9001, 14001 and 50001.

### QM, UM & EM

In March 2018, the certificates for our quality management system according to DIN EN ISO 9001:2015, the environmental management system according to DIN EN ISO 14001:2015, and the energy management system according to DIN EN ISO 50001:2011 were reconfirmed. DIN EN ISO 9001:2015 is concerned with customer focus and process quality with regard to product and design requirements as well as satisfaction.

DIN EN ISO 14001:2015 is the certification standard of environmental management systems recognised worldwide. Certification according to DIN EN ISO 50001:2011 confirms the measures taken by the company to reduce costs in conjunction with energy management.

### GS

The Möbelprüfinstitut LGA Nürnberg [Furniture Test Institute LGA, Nuremberg] has subjected the ranges of this collection to a safety inspection. As a result of this inspection, we were awarded the GS seal certifying that the requirements with regard to operating convenience, load capacity, material consistency and safety have been met in full.

### Goldenes M

The DGM [Deutsche Gütegemeinschaft Möbel - (German furniture quality seal)] have tested nobilia in accordance with RAL-GZ 430. Following this test, nobilia was awarded the RAL quality seal, the „Golden M“. This ensures that each kitchen leaving our factory complies with up-to-date standards and quality requirements of the market.

### PEFC

The company is certified in accordance with the PEFC. The certification permits nobilia to use wood for kitchen furniture production that comes from sustainably managed forests and other managed sources. PEFC = Programme for the Endorsement of Forest Certification Schemes.

### Emission Class DGM:

The furniture in this collection was awarded the emissions label of the Deutschen Gütegemeinschaft Möbel e.V. (The German Association of Quality Furniture) with the highest emissions class of A in accordance with the award requirements.



# FORM

FORMKITCHENS.COM



FORMKITCHENS



/FORMKitchensUSA



461 2nd St, San Francisco, CA 94107